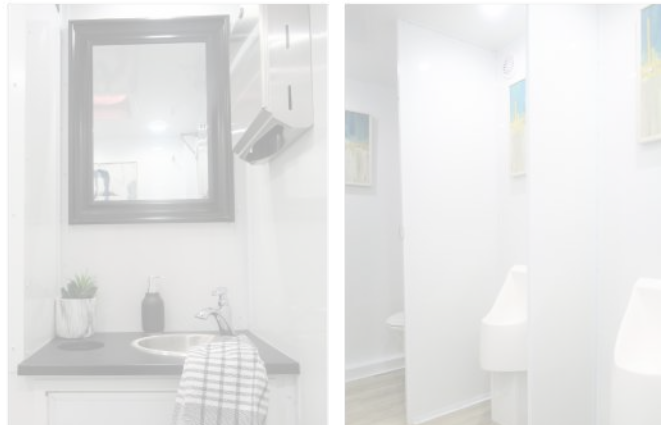
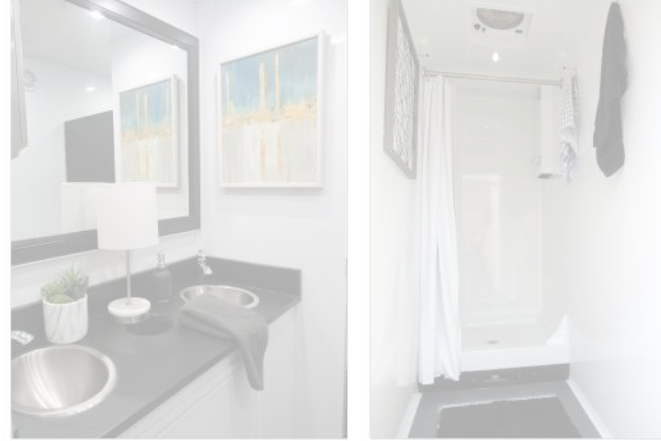


# Lavish Restroom Rentals

restroom - shower - laundry - bunk trailers

RENTAL SOLUTIONS FOR:  
emergencies, remodels,  
temporary employees,  
remote job sites & more



# COMMERCIAL RENTAL GUIDE

Call Today! 810-318-5050

[www.LavishRestroom.rentals](http://www.LavishRestroom.rentals)

## Contents

- ADA + 2 Restroom Trailer
- 5 Station Lavish Restroom Trailer
- 9 Station Lavish Restroom Trailer
- ADA+ 2 Private Showers Trailer
- ADA Shower & Restroom Combo
- 2 Station Shower & Restroom Combo
- 8 Station Private Shower Trailer
- 8 Station Laundry Trailer
- 16 Person Bunkhouse Trailer



# Lavish ADA + 2 Restroom Trailer

The **Lavish ADA + 2 Restroom Trailer** is specifically designed to comply with the Americans with Disabilities Act. It's easily accessible for individuals in wheelchairs or elderly end-users. This trailer is recommended for events with up to 200 attendees and is also suitable for job sites with up to 30 employees.



## STANDARD FEATURES

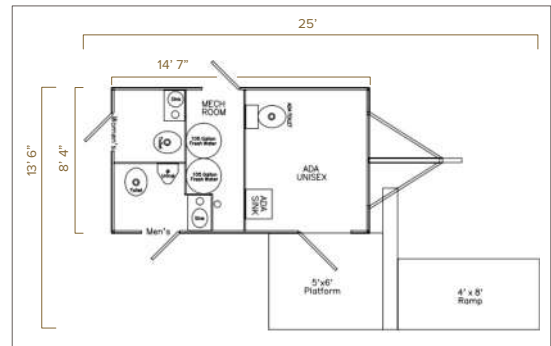
- **Designed to be lowered during install to shorten length of ramp**
- **Self-contained, easy to deploy ramp, sets up quickly**
- Equipped with AC/Heating
- White china toilets with foot flush
- Interior & Exterior LED Lights
- Seamless Gel-coated Fiberglass Walls, Ceiling, and Subfloor
- Oversized Mirrors
- Stainless Steel Sinks
- Smart Touch Digital Thermostat

## SPECIFICATIONS

Number of Stations	Womens - 1, Mens - 1, ADA Unisex 1
Box Size	8' 4" x 14' 7"
Length w/ Ramp in Use	25'
Width w/ Ramp in Use	13' 6"
Height w/ AC	12' 6"
Fresh Water Tank	210 Gallons
Waste Tank	300 Gallons
Power Requirements	Two dedicated 120 Volt-20 amp circuit within 100' of the trailer.
No. of AC Units	1

For information on how to reserve this trailer visit:  
[www.LavishRestroom.rentals](http://www.LavishRestroom.rentals)

**810-318-5050**



Give Us a Call Today to Discuss Your Long-term Rental Needs!

The **Lavish 5 Station Restroom Trailer** is our most popular luxury restroom. It is clean, comfortable and climate-controlled. The unit is compact enough to fit into small event spaces, yet spacious enough to handle large crowds. We generally recommend this size trailer for 4-6 hour events with up to 350 guests or job sites with up to 50 employees.



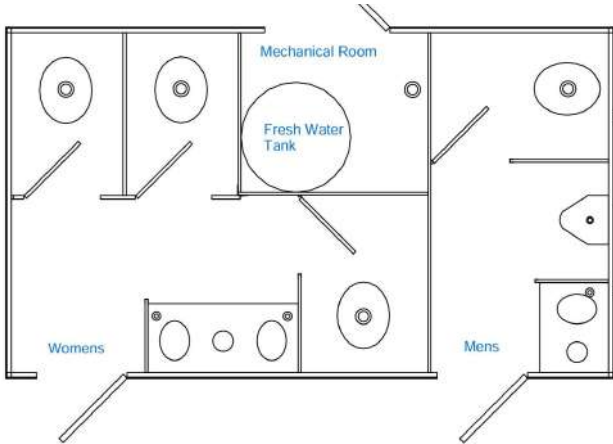
### LAVISH FEATURES:

- **WOMEN'S** - 3 stalls, 2 sinks
- **MEN'S** - 1 stall, 1 urinal, 1 sink
- Equipped with AC/Heating
- On Board Water Tanks
- Fully Stocked with Supplies
- Interior & Exterior LED Lights
- Self Leveling Stairs with Platforms & Railings
- Seamless Gel-coated Fiberglass Walls, Ceiling, and Subfloor
- Oversized Mirrors
- Stainless Steel Sinks
- Smart Touch Digital Thermostat

Give Us a Call Today to Discuss Your Long-term Rental Needs!

### SPECIFICATIONS

Number of Stations	Womens - 3, Mens - 2
Box Size	14'6" x 8' 5"
Length w/ tongue	19'10"
Width w/ Stairs	12'4"
Height w/ AC	11'7"
Fresh Water Tank	200 Gallons
Waste Tank	520 Gallons
Power Requirements	One dedicated 120 Volt-20 amp circuit within 100' of the trailer.
No. of AC Units	1



For information on how to reserve this trailer visit:  
[www.LavishRestroom.rentals](http://www.LavishRestroom.rentals)

810-318-5050



# Lavish Restroom Rentals

restroom - shower - laundry - bunk trailers

## Lavish 9 Station Restroom Trailer

The **9 Station Restroom Trailer** is a large luxury restroom trailer that is clean, comfortable and climate-controlled. This transportable, fully-functioning restroom is equipped to handle numerous users during events, remodels, and temporary uses. We generally recommend using this size trailer for 4-6 hour events of up to 600 people or job sites with more than 50 employees.



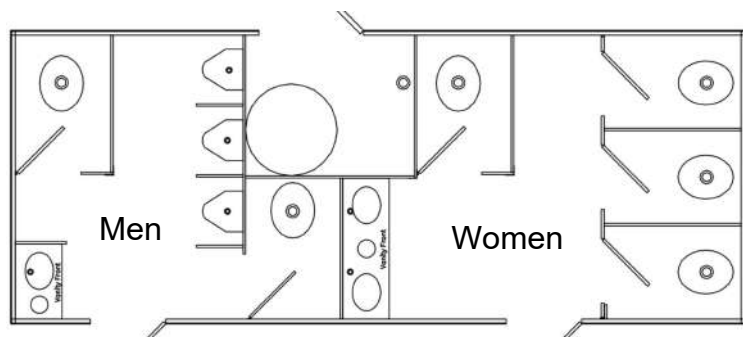
### LAVISH FEATURES:

- **WOMEN'S** - 4 stalls, 2 sinks
- **MEN'S** - 2 stalls, 3 urinals, 1 sink
- Onboard water tank
- Equipped with AC/Heating
- White china toilets with foot flush
- Interior & Exterior LED Lights
- Self Leveling Stairs with Platforms & Railings
- Seamless Gel-coated Fiberglass Walls, Ceiling, and Subfloor
- Oversized Mirrors with Decorative Frames
- Stainless Steel Sinks
- Smart Touch Digital Thermostat (x2)

Give Us a  
Call Today to  
Discuss Your  
Long-term  
Rental Needs!

### SPECIFICATIONS

Number of Stations	Womens - 4, Mens - 5
Box Size	8' 5" x 21"
Length w/ tongue	26' 4"
Width w/ Stairs	12' 4"
Height w/ AC	11' 10"
Fresh Water Tank	200 Gallons
Waste Tank	750 Gallons
Power Requirements	Two dedicated 120 Volt-20 amp circuit within 100' of the trailer.
No. of AC Units	2



For information on how to reserve this trailer visit:

[www.LavishRestroom.rentals](http://www.LavishRestroom.rentals)

810-318-5050



For a convenient solution to meet ADA users' needs, consider the **Lavish ADA Shower & Restroom Combo**. Despite its compact size, the trailer ensures privacy. This unit fulfills ADA-compliant shower requirements. The trailer is widely used in homeless outreach and elderly centers due to its practicality and accessibility.



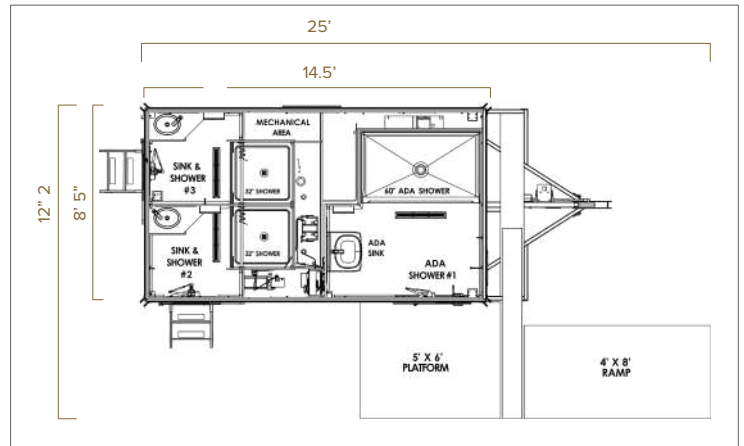
**STANDARD FEATURES**

- Equipped with AC/Heating
- Designed to be lowered during install to shorten length of ramp
- Self-contained, easy to deploy ramp, sets up quickly
- ADA Shower with seat and wand
- ADA Sink
- Hot and cold water controls
- Shower heads metered to 1.5 gpm
- Large vanity
- Seamless Gel-coated Fiberglass Walls, Ceiling, and Subfloor
- Smart Touch Digital Thermostat



**SPECIFICATIONS**

Number of Stations	2 Unisex, 1 ADA Unisex
Box Size	8' 5" x 14.5'
Length w/ tongue	25'
Width w/ Stairs	13' 6"
Fresh Water Tank	105 Gallons
Waste Tank	300 Gallons
Power Requirements	2 dedicated 120 Volt-20 amp circuits
No. of AC Units	1



For information on how to reserve this trailer visit:  
[www.LavishRestroom.rentals](http://www.LavishRestroom.rentals)

**810-318-5050**

The **Lavish ADA Shower & Restroom Combo** is a compact and private trailer that ensures your site meets the needs and requirements of ADA users. It fulfills both shower and toilet needs as per ADA standards. This trailer is a preferred choice for homeless outreach programs and elderly care centers.

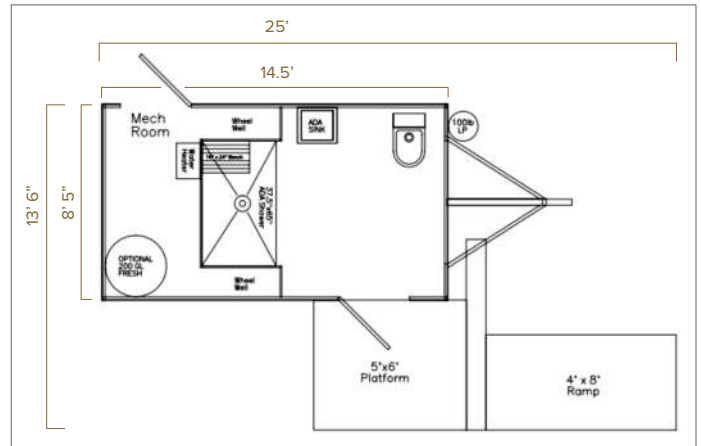
**STANDARD FEATURES**

- Equipped with AC/Heating
- Designed to be lowered during install to shorten length of ramp
- Self-contained, easy to deploy ramp, sets up quickly
- ADA China toilet with handle bars
- ADA Shower with seat and wand
- ADA Sink
- Hot and cold water controls
- Shower heads metered to 1.5 gpm
- Large vanity
- Seamless Gel-coated Fiberglass Walls, Ceiling, and Subfloor
- Smart Touch Digital Thermostat



**SPECIFICATIONS**

Number of Stations	1
Box Size	8' 5" x 14.5'
Length w/ tongue	25'
Width w/ Stairs	13' 6"
Fresh Water Tank	105 Gallons
Waste Tank	300 Gallons
Power Requirements	2 dedicated 120 Volt-20 amp circuits
No. of AC Units	1



For information on how to reserve this trailer visit:  
[www.LavishRestroom.rentals](http://www.LavishRestroom.rentals)

**810-318-5050**

For gatherings with up to 150 people, the **Lavish 2 Station Restroom & Shower Combo Trailer** is the perfect, space-saving solution. It's an excellent choice for worksites, schools, and remodeling projects. This trailer is ideal for jobsites with a workforce of 20 or fewer employees.



**STANDARD FEATURES**

- Each Private Bathroom has 1 toilet, 1 sink, 1 shower
- Equipped with AC/Heating
- White china toilets with foot flush
- Interior & Exterior LED Lights
- Hot and cold water controls
- Shower heads metered to 1.5 gpm
- Seamless Gel-coated Fiberglass Walls, Ceiling, and Subfloor
- Oversized Mirrors with Decorative Frames
- Stainless Steel Sinks
- Smart Touch Digital Thermostat

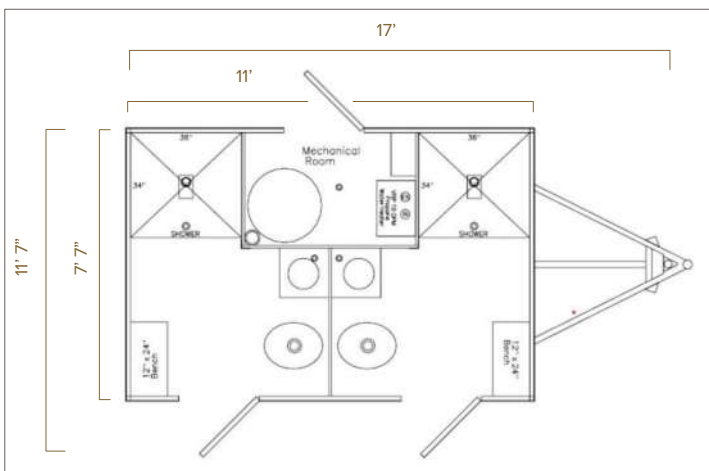
Give Us a Call Today to Discuss Your Long-term Rental Needs!

**SPECIFICATIONS**

Number of Stations	2
Box Size	7' 7" x 11'
Length w/ tongue	17'
Width w/ Stairs	11' 7"
Fresh Water Tank	105 Gallons
Waste Tank	300 Gallons
Power Requirements	2 dedicated 120 Volt-20 amp circuits
No. of AC Units	1

For information on how to reserve this trailer visit:  
[www.LavishRestroom.rentals](http://www.LavishRestroom.rentals)

**810-318-5050**





The **Lavish 8 Station Private Shower Trailer** contains 8 private shower cabins which allows personal security and easy cleaning compared to most shower trailers. The unit is also equipped with 4 community sink hand washing stations on the exterior of the trailer. Useful for festivals, disaster relief, homeless camps, and other temporary sites.



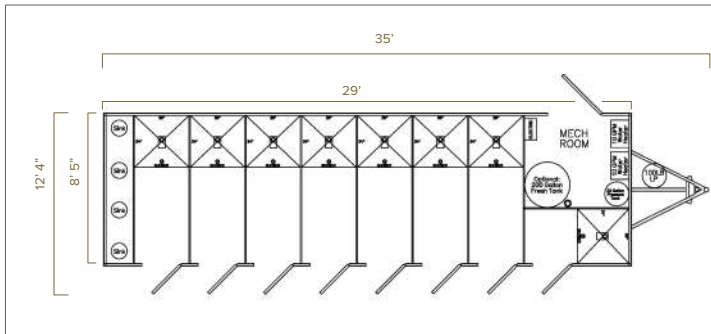
Give Us a Call Today to Discuss Your Long-term Rental Needs!

## STANDARD FEATURES

- 8 Completely private rooms
- Hot and cold water controls
- Shower heads metered to 1.5 gpm
- Can be connected to onsite septic
- CAL Fire approved
- Equipped with AC/Heating
- Seamless Gel-coated Fiberglass Walls, Ceiling, and Subfloor
- Smart Touch Digital Thermostat (x2)

## SPECIFICATIONS

Number of Stations	8 Private cabins + exterior 4 sink hand wash station
Box Size	8' 5" x 29'
Length w/ tongue	35'
Width w/ Stairs	12' 4"
Height w/ AC	11' 10"
Onboard water tank	200 Gallons
Waste Tank	950 Gallons
Power Requirements	One 50amp 220V circuit within 100' of the trailer.
No. of AC Units	2



For information on how to reserve this trailer visit:  
[www.LavishRestroom.rentals](http://www.LavishRestroom.rentals)

810-318-5050



The **Lavish 8 Station Laundry Trailer** provides unparalleled convenience, enabling users to do laundry anytime, anywhere, and under various circumstances. Mobile laundry trailers serve as invaluable resources in diverse industries. They are particularly useful in disaster relief, oil and gas fields, mining, outreach programs for the homeless, special events, and other situations requiring rapid deployment of mobile laundry facilities. Lavish mobile laundry units stand out for their durability, low maintenance requirements, and user-friendly design.



**STANDARD FEATURES**

- 8 industrial Whirlpool washer and dryers
- Full range of wash and dry cycles
- Large basin sink
- Folding table
- LED light & HVAC

Give Us a Call Today to Discuss Your Long-term Rental Needs!

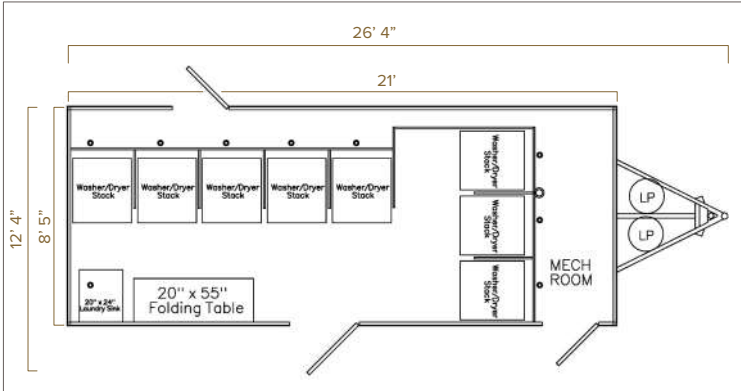


**SPECIFICATIONS**

Number of Stations	8 Washers, 8 Dryers
Box Size	8' 5" x 21'
Length w/ tongue	26' 4"
Width w/ Stairs	12' 4"
Waste Tank	750 Gallons
Power Requirements	2 dedicated 50 Amp – 240 Volt-20 amp circuits
No. of AC Units	2

For information on how to reserve this trailer visit:  
[www.LavishRestroom.rentals](http://www.LavishRestroom.rentals)

**810-318-5050**



The **Lavish 16 Person Bunkhouse Trailer** is a great temporary housing option with numerous industry applications. This 16 bed trailer is able to house 16 together or be converted into a split 8 and 8 trailer with a lockable divider. Each bed or bunk has a 32" wide x 76" long x 5" thick mattress. Each bunk is equipped with an outlet, USB port and LED reading light. Each trailer is equipped with two 13,500 BTU AC units, Exterior DOT Lighting and LED Entrance Lighting for Stairs. This trailer has 2 separate entrances, front and rear of the trailer, along with 2 egress emergency break out windows.



**Interior Features:**

- One piece vinyl flooring
- Seamless gel-coated fiberglass interior / exterior walls
- One piece gel-coated fiberglass ceiling / roof
- White aluminum trim
- Locking Pocket door to separate rooms
- 32' wide x 76" long x 5" thick mattress foam core, Antibacterial Vinyl Coating
- 60" anodized Ladder for top bunk
- Outlets (1 for each bunk)
- USB port ( 1 for each bunk)
- LED light with switch (one for each bunk)

**Electrical:**

- 13,500 BTU A/C with insulated ducts and registers
- 5,000 BTU heat strip with insulated ducts and registers
- Smart Touch Thermostat
- Locking Thermostat Covers
- 7 Pin Plug, breakaway protection
- Converter with charge protection - 30 AMP
- Full Size Deep Cycle Battery Group 24 with case
- LED DOT safety lights
- LED interior lighting
- LED Porch lights
- Individually fused LED 6 gang switch panel

**Exterior Features:**

- 24" entrance doors
- 24" fold out stairs with railing
- Emergency Egress Windows

**Give Us a  
Call Today to  
Discuss Your  
Long-term  
Rental Needs!**



For information on how to reserve this trailer visit:

[www.LavishRestroom.rentals](http://www.LavishRestroom.rentals)

**810-318-5050**

